

L1L2F Passive Filter

Features

- ❖ L1 & L2 GNSS Bands
- ❖ Excellent Out of Band Rejection
- ❖ Passes DC for Active Antennas



Description

Designed with the thin link margins of satellite navigation systems in mind, the L1L2F is a single input L1 L2 Band Passive Filter that passes only the L1 and L2 GPS frequencies. The device features excellent side band rejection with an insertion loss of less than 5dB. The product may pass DC or can also be used as a DC block.

The L1L2F Passive Filter comes with many available options to meet your specific needs. Please call, fax, email (sales@gpssource.com), or visit our website (www.gpssource.com) for further information on product options & specifications.

L1L2F Passive Filter

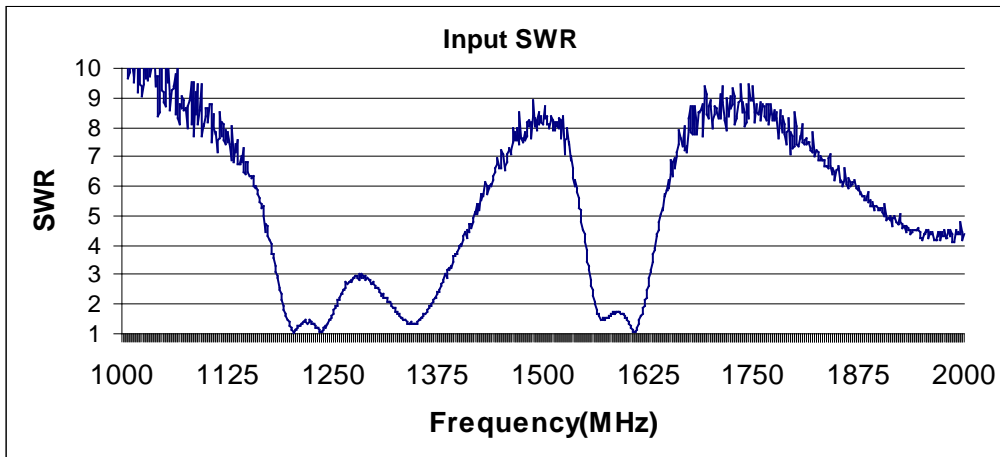
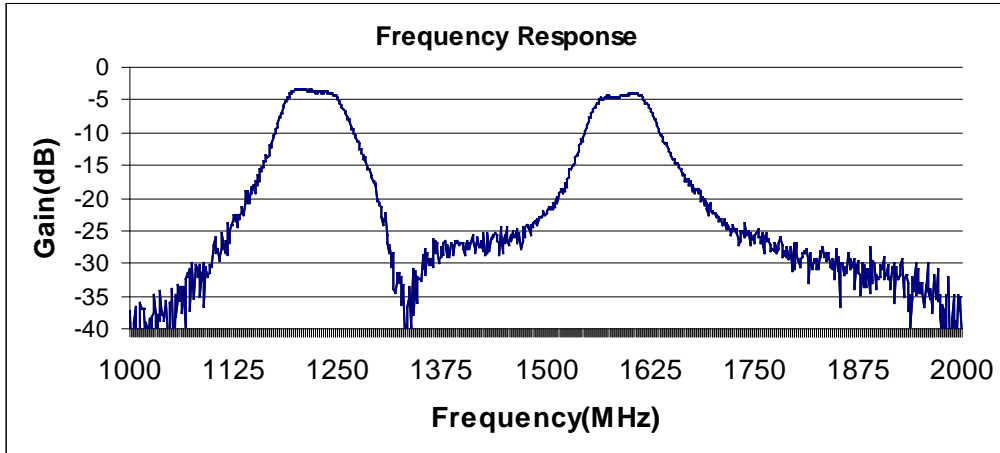
Electrical Specifications, Operating Temperature -40 to 85⁰ C

Parameter		Conditions	Min	Typ	Max	Units
Freq. Range: 1227.6MHz 1575.4MHz		IN – OUT, IN/OUT-50Ω	1.185 1.555		1.250 1.625	GHz
In/Out Imped.		IN, OUT		50		Ω
Insertion Loss 1227MHz 1575MHz		IN – OUT, IN/OU-50Ω	3 4	3.5 4.5	5 5	dB
Rejection 1227MHz 1575MHz		IN – OUT, IN/OUT-50Ω; +/- 75MHz +/- 100MHz +/- 75MHz +/- 100MHz	-16 -20 -12 -16			dB
Input SWR		OUT Port - 50Ω			2.0:1	-
Output SWR		IN Port - 50Ω			2.0:1	-
DC IN	Pass DC	DC Input on OUT port	3		16	VDC
Device Current		Current Consumption of device, excludes Ant. Cur.			38	mA
Ant/Thru Current	Pass DC	DC Input on OUT port			250	mA
Max RF Input		Max RF input without damage			30	dBm

L1L2F Passive Filter

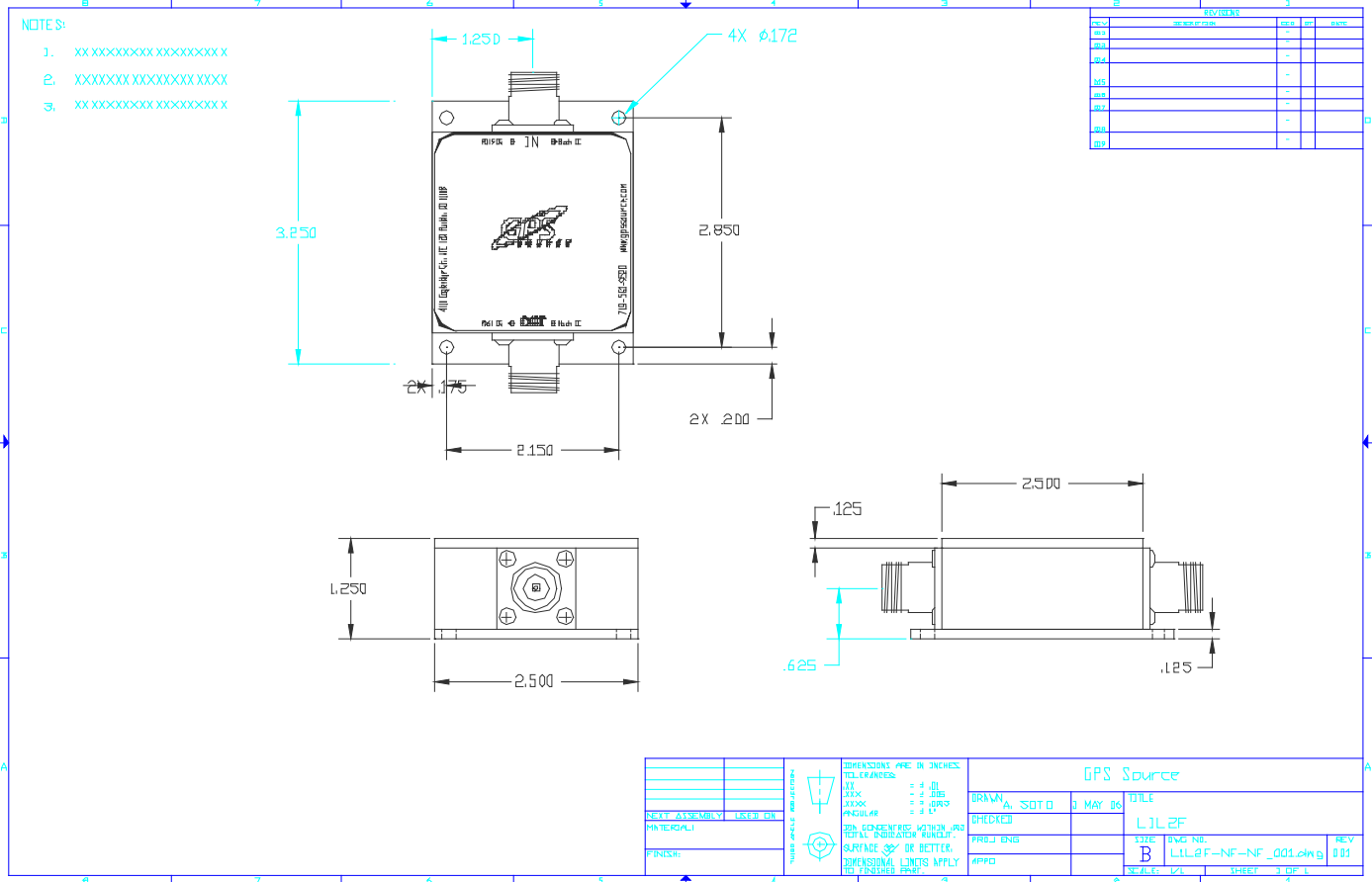
Performance Data

L1L2F Passive Filter



L1L2F Passive Filter

Mechanical Specifications



64 N. Mission Drive
 Pueblo, CO 81007
 Tel: 719.561.9520 fax: 719.565.0890
 Email: techsales@gpssource.com

Author: Preetha Sayuj
 Department: R&D

Description: GPS L1/L2 Filter
 Doc. No.: 1547-TS-GPS-L1L2-Passive-Filter-03
 Date: 04/30/2013
 www.gpssource.com

L1L2F Passive Filter

Available Options:

Power Supply Options:		
Source Voltage Options	Voltage Input	Type
	110 VAC	Wall Mount Transformer
	220 VAC	Wall Mount Transformer
	240 VAC (U.K.)	Wall Mount Transformer
	DC 5-28 VDC	Military Style Connector or w/Quick Connects
Output Voltage Options ⁽¹⁾	DC Voltage Out ⁽²⁾	
	3.3	
	5	
	7.5	
	9	
	12	
	Variable (3-12V)	
Custom		
RF Connector Options:		
Connector Options	Connector Type	Limitations
	N (Male & Female)	
	SMA (Male & Female)	
TNC (Male & Female)		
Housing Options:		
Housings	Housing Type	Limitations
	Standard	None
Port Options:		
Pass DC ⁽¹⁾	IN Port Passes DC	
DC Blocked ⁽¹⁾	IN Port Blocks DC	

Notes:

1. With Powered Option, any or all RF ports (input or output) can be DC Blocked or can pass the powered DC voltage
2. Maximum combined DC current draw out all ports of the device is a function of the DC input voltage and desired DC output voltage , according to the following:

$$I_{out} \leq 1.4 / (V_{DC\ IN} - V_{DC\ OUT}) - 0.007 \quad \text{Amps (or 250mA max)}$$

For powered option with a wall mount transformer (Voltage Input = 110/220/240 VAC), $V_{DC\ IN}$ is 9V.

L1L2F Passive Filter

Part Number

L1L2F – X – P110 / 5 – SF

Product:

Standard

Environmental Options(s):

X = (Any or All of the Following):

E = EMI Shielding

W = Waterproof

HS = Hermetically Sealed

Leave Blank if None

Source Voltage:

P110 – Transformer,

P220 – Transformer,

P240 – Transformer,

PDC – Tinned Leads

PM – Military Connector (User supplies DC)

PMS – Military Connector (1275B or 704)

Output Voltage:

3.3, 5, 7.5, 9, 12, XX, V – Denotes Output Voltage

(XX – custom output voltage, V – variable)

Connector Options:

NM – N, Male

NF – N, Female

SM – SMA, Male

SF – SMA, Female

TM – TNC, Male

TF – TNC, Female

For help in creating the part number to meet your exact needs, contact us at Sales@gpssource.com or visit our website at www.gpssource.com.